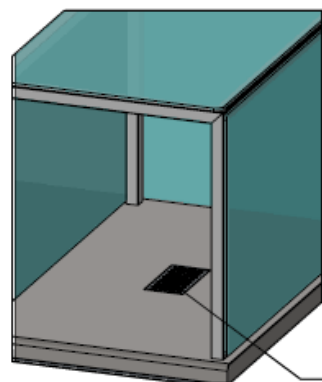


## WORKING TABLE FOR BATTERY CLEANING, WITH 2 DRAWERS AND LOWER SHELF, WITHOUT REAR UPSTAND, DIM. 2000X850X900+500Hmm

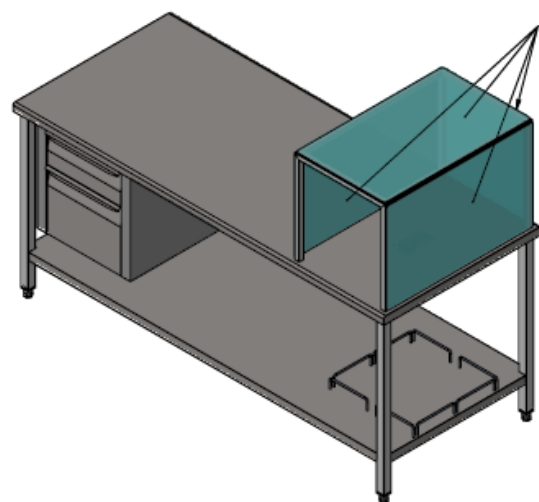
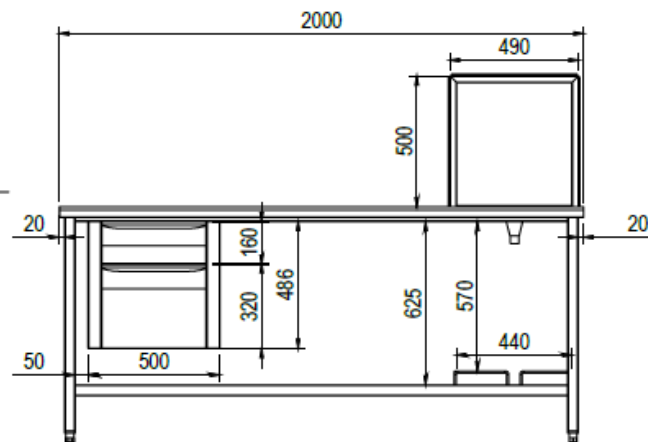
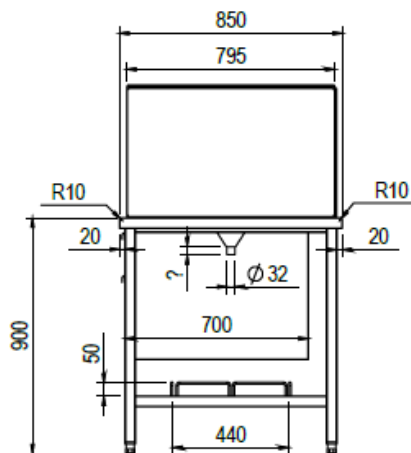


Frame structure in stainless steel AISI 304 fully welded 40x40mm tube, 1.00mm thick, non advanced rear legs. Lower shelf completely welded to the structure. Working top in AISI 304 sheet, 1.20mm thick, with inner plywood reinforcement and stainless steel lower cover. Rounded (R=10mm) front edge, as well as rounded (R=2mm) side and back edges. Under-top drawer unit with 2 drawers fixed on stainless steel rails, dim. 500x700x480. On the left, structure with stainless steel frame and transparent polycarbonate panels on 3 sides and top, dim. 490x850x550Hmm. Underneath funnel system fixed under the working top and removable, with Ø32mm pipe, H=100mm for vacuum connection. Containment rods welded to the lower shelf to block the vacuum. On adjustable feet.

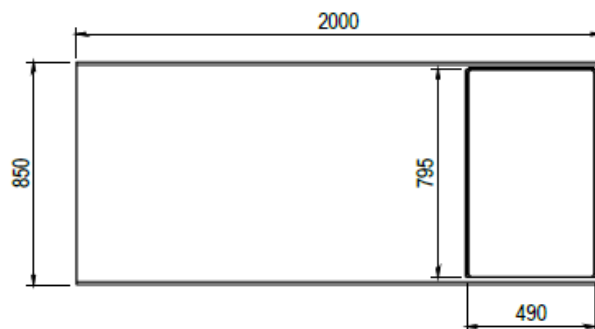
DETTAGLIO A  
SCALA 2 : 25



GRILLE AMOVIBILE



LEXAN



**TS4**

Tolleranze generali dimensioni:	UNI ISO 2768-mk		Scala:	1:25	Peso:	117,926 kg
			Materiale:			
			Sviluppo:		x x	
			Treatment:			

Serie:	Codice articolo:	Codice cliente:
Descrizione: TAVOLO DA LAVORO PER PULIZIA BATTERIE C/2 CASSETTI E RIPIANO INFERIORE S/SPONDA DIM. 2000X500X900+500H		Codice: <b>TS21000944-000B</b>
		Rev.