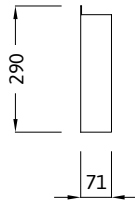


| L | Cod. |
|---|------|
|---|------|

250 T57007001



L = LARGHEZZA / LENGTH / LANGE / LONGUEUR.

IT Dispenser a parete scatole guanti

Realizzato in acciaio inox AISI 304. Consente l'inserimento delle scatole di guanti coricate per facilitare l'estrazione del consumabile frontalmente. Predisposto per il fissaggio a parete.

EN Wall dispenser for glove boxes

Manufactured in stainless steel AISI 304. Allowing the insertion of consumable glove boxes in a horizontal position to facilitate the extraction of consumable from the front side.

DE Wandspender für Handschuhspenderbox

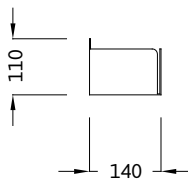
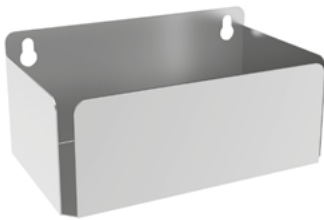
Hergestellt aus Edelstahl 1.4301. Einfügen von Handschuhspenderboxen in horizontaler Position, um die Extraktion von Verbrauchsartikel von vorne zu erleichtern.

FR Distributeur de mur pour boîtes à gants

Fabriqu  en acier inox AISI 304. Il permet l'insertion de boîtes de gants en position horizontale pour faciliter l'extraction frontale des consommables.

| L | Cod. |
|---|------|
|---|------|

250 T57006001



L = LARGHEZZA / LENGTH / LANGE / LONGUEUR.

IT Dispenser a parete scatole guanti

Realizzato in acciaio inox AISI 304. Consente l'inserimento delle scatole di guanti e l'estrazione del consumabile dall'alto. Predisposto per il fissaggio a parete.

EN Wall dispenser for glove boxes

Manufactured in stainless steel AISI 304. Allowing the insertion of consumable glove boxes for upper extraction.

DE Wandspender für Handschuhspenderbox

Hergestellt aus Edelstahl 1.4301. Einfügen von Handschuhspenderboxen für Extraktion von oben.

FR Distributeur de mur pour boîtes à gants

Fabriqu  en acier inox AISI 304. Il permet l'insertion de boîtes de gants pour extraction des consommables de dessus.