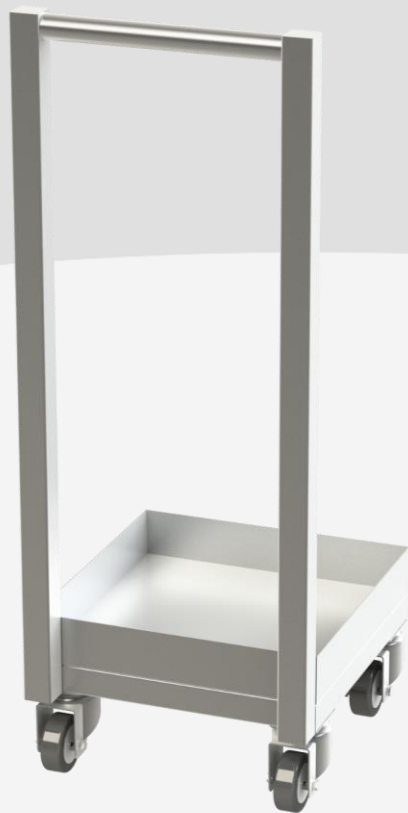
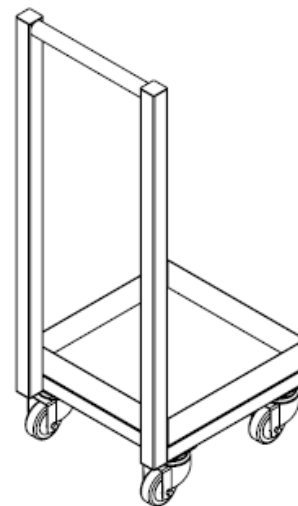
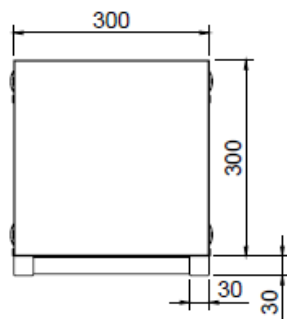
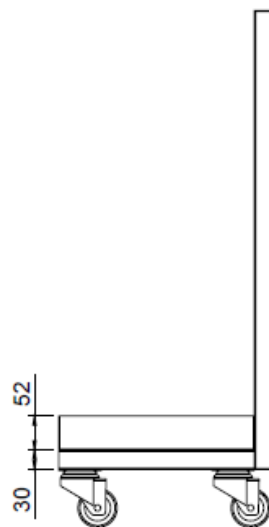
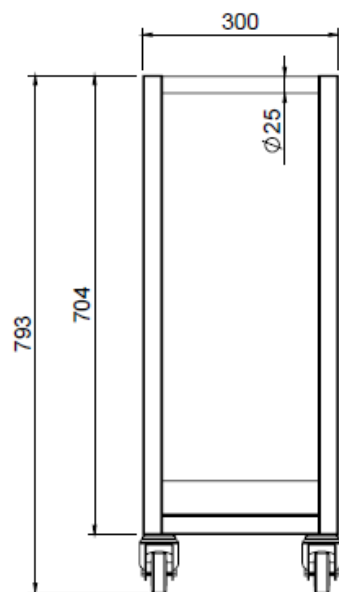


CARRITO DE ACERO INOXIDABLE AISI 316 CON
PLATAFORMA BAJA Y EMPUÑADURA DIM.
300X300X793Hmm



Fabricado en acero inoxidable AISI 316, acabado Scotch Brite. Marco en tubo cuadrado 30x30mm, espesor 20/10. Estante H=30mm con borde perimetral H=52mm. Empuñadura en tubo redondo Ø25mm de altura H=704mm, altura total H=793. Sobre ruedas giratorias.





| | | | | | |
|-----|------------|-----------------|------------|-------------------|-----------------|
| 2 | | | | | |
| 1 | | | | | |
| A | | 25/05/2023 | | | PRIMA EMISSIONE |
| REV | Disegnato: | Data emissione: | Approvato: | Data ultimo agg.: | Descrizione: |

Note:



| | | | | | | |
|-------------------------------------|-----------------|--|------------|--------------|-------|----------|
| Tolleranza generale: dimensioni: | UNI ISO 2768-mk | | Scala: | 1:10 | Peso: | 8,665 kg |
| | | | Materiale: | | | |
| | | | Sviluppo: | x x | | |
| | | | Cliente: | Trattamento: | | |

| | | |
|---|------------------|-----------------|
| Serie: | Codice articolo: | Codice cliente: |
| Descrizione: | Codice: Rev. | |
| CARRELLO N.1 AISI 316 DIM. 300X300X754Hmm | TS23000547-000A | |