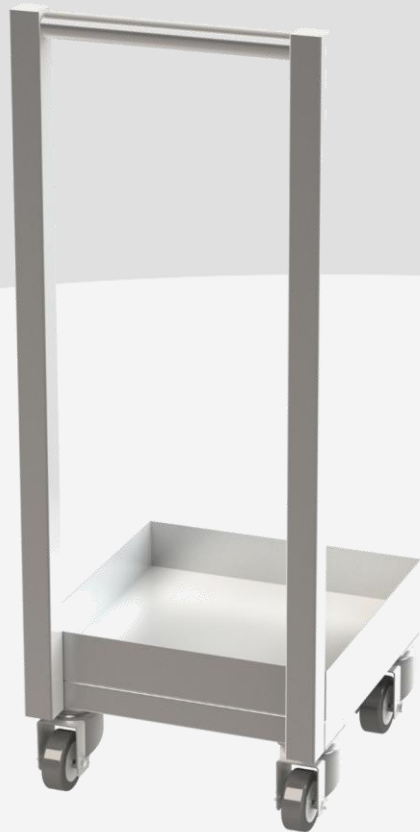
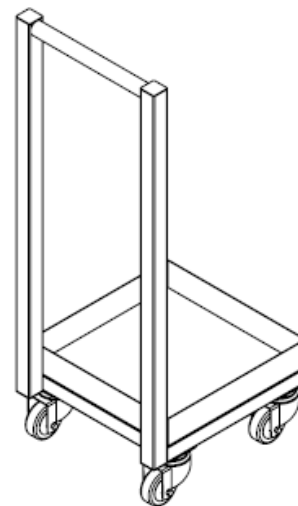
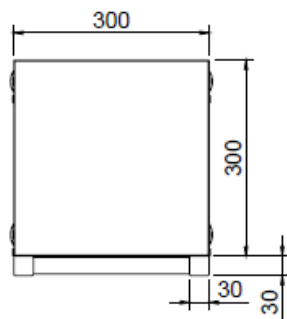
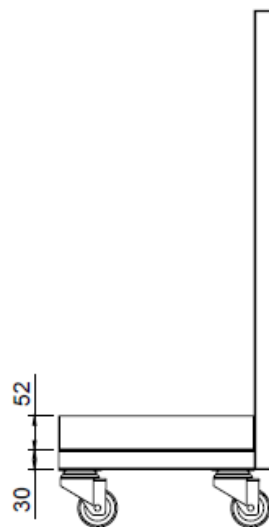
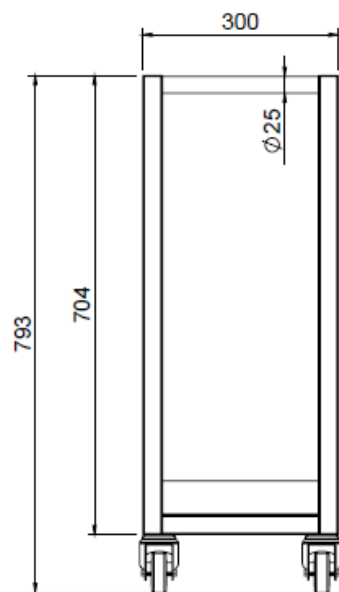


STAINLESS STEEL TROLLEY WITH LOW PLATFORM AND PULL HANDLE, DIM. 300X300X793Hmm



Made of AISI 304 stainless steel with Scotch Brite finish. Frame structure in 40x40mm tube, 2.00mm thick. H=30mm platform with perimeter edge H=52mm. Pull handle Ø25mm, H=704mm. Total height 793mm. On 4 swivel castors.





2					
1					
A		25/05/2023			PRIMA EMISSIONE
REV	Disegnato:	Data emissione:	Approvato:	Data ultimo agg.:	Descrizione:

Note:

TS4

Tolleranza generale: dimensioni:	UNI ISO 2768-mk		Scala:	1:10	Peso:	8,665 kg
			Materiale:			
			Sviluppo:		x x	
			Cliente:		Treatmento:	

Serie:	Codice articolo:	Codice cliente:
Descrizione:	Codice: Rev.	
CARRELLO N.1 AISI 316 DIM. 300X300X754Hmm	TS23000547-000A	